



Lawrenceville Happenings Meeting

7/13/23, 6:30 p.m.

Welcome! Please sign in at bit.ly/LUSignIn



Tonight's agenda

1. Welcome
 2. Introductions from LC and LU
 3. URA Housing Opportunities Fund
 4. Neighborhood Updates
 5. Upcoming Calendar
 6. Open Q & A
-

LAWRENCEVILLE



UNITED



About Lawrenceville United

- Mission: to improve and protect quality of life for all Lawrenceville residents
- Membership of over 800 residents
- Board comprised of all residents: elected by our membership
- Programs: Lawrenceville Farmers Market, supporting older adults, free food distributions, cleaning & greening, direct support & case management, advocacy, and more.



LAWRENCEVILLE



UNITED



About Lawrenceville Corporation

- Mission: Driven by the Lawrenceville community, the Lawrenceville Corporation acts as the catalyst and conduit for responsible and sustainable growth.
 - Membership: About 100, primarily business owners
 - Board: Mostly comprised of residents, property owners, and business owners and elected by our membership - 16 members
 - Programs: Business district management, policy and advocacy, community planning and development, real estate development, and communications and marketing
-





URA Housing Opportunity Fund

- *Jahd Burns*

The Housing Opportunity Fund (HOF), administered by the Urban Redevelopment Authority of Pittsburgh, supports the development and preservation of affordable and accessible housing within the City of Pittsburgh.

LAWRENCEVILLE



UNITED



LAWRENCEVILLE
CORPORATION

Green Boulevard Update



40th Street Connector

- Path behind Arsenal 201 Development
- Under the 40th Street bridge onto Willow

LAWRENCEVILLE



UNITED

Wisdom Keeper Mural



LAWRENCEVILLE



UNITED



LAWRENCEVILLE
CORPORATION



**Get involved
in the
Wisdom
Keepers
Project!**

**Let's create a Lawrenceville oral history that
can be shared for generations to come!**

**Sign up to be a storyteller or story collector at
bit.ly/LVWisdomKeeper
or contact Emma at 412-301-5962 /
emma@lunited.org**

LAWRENCEVILLE



UNITED



LAWRENCEVILLE
CORPORATION



Arsenal Park Public Art



LAWRENCEVILLE



UNITED



SQUIRREL

History / Fire element



Sasha Reisin & Urbanismo Vivo - Arsenal Park

SQUIRREL

In the heart of the park, a common creature thrives, captivating visitors with its unique agility and swift movements. This delightful animal, the squirrel, not only brings joy through its friendly interactions with humans but also holds a profound symbolic meaning. Across cultures, squirrels are revered as symbols of resourcefulness, energy, and playfulness, embodying the connection between different elements of the natural world.

HISTORY FIREWORKS/ARSENAL

The 4th of July fireworks, a beloved tradition in the park, illuminate the sky with joyous light. They create a sense of community and family bonding, while also honoring the park's rich history. Through the fireworks, we commemorate the Arsenal past and celebrate the park's vibrant heritage, embodied in its iconic buildings and monuments.

LAWRENCEVILLE



UNITED



TREE TURTLE

Indigenous Cultures / Earth element



Sasha Reisin & Urbanismo Vivo - Arsenal Park

TURTLE

The turtle, with its rich symbolic history in indigenous cultures, holds profound significance. In the Seneca "story of the sky woman," it becomes a powerful link between the sky and the earth, embodying ancestral traditions and meanings that are often overlooked. Its slow and steady movements symbolize patience, resilience, and longevity, reminding us of the wisdom found in taking life's journey one step at a time.

INDIGENOUS CULTURES

The trees were one of the most significant elements of the park and were frequently mentioned in the stories people shared. Whether it was because of their scarcity in the surrounding areas or the beauty of the trees in the park, they were commented on by everyone.

In particular, trees have a direct connection to "Story of the sky woman" and this image emerged frequently in the workshop with the school. Trees not only symbolize the connection between the sky and the earth but also represent a source of life and shelter for many animals that inhabit the park. As such, they are an integral part of the natural environment and help to sustain the delicate balance of the ecosystem.

LAWRENCEVILLE

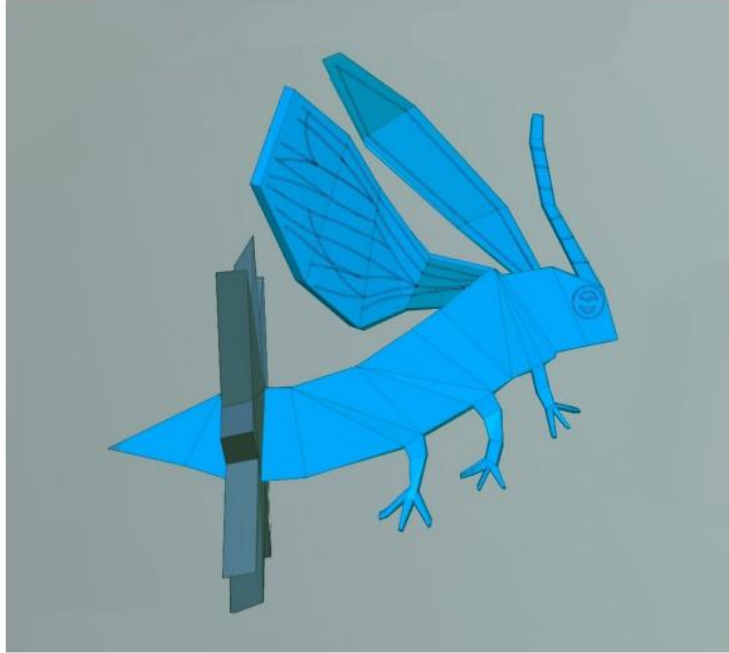


UNITED



FIREFLY

Cultural Diversity / Air element



Sasha Reisin & Urbanismo Vivo - Arsenal Park

FIREFLIES

Within the often overlooked and ignored world of insects lies the firefly, which plays a crucial role in the natural ecosystem of parks. Despite their small size and humble appearance, they captivate us in a unique and almost romantic way. Their flickering light in the darkness acts as a mysterious and enchanting signal.

In many ways, insects become a metaphor for the hidden stories of Lawrenceville. Like these tiny creatures, the stories may be initially difficult to see or understand, yet they reside, patiently waiting to be discovered and appreciated. They form a rich tapestry of experiences and cultures, intricately woven to shape the community over time—from migrations and settlements to the processes of development and growth. Just as insects play an integral part in the ecosystem, these stories form an essential part of the community's identity, deserving of our attention and exploration.

MIGRATION: FLYING

The flying insect, with its mesmerizing glow, illuminates the vast expanse "in the middle of nowhere," breathing new life into the surrounding airspace. This luminescence serves as a reference to the inherent value placed on migration stories, symbolizing the transformative journey from one place to another that shapes our identities. It embodies the idea of mobility, showcasing the ability to adapt and flourish in new environments.

Adorned with a star-shaped tail embellished with mirrors, this radiant creature not only shines brightly in the sunlight but also reflects its surroundings. It becomes a captivating embodiment of the interconnectedness between self and environment, reminding us of the profound influence our surroundings have on our own luminosity.

LAWRENCEVILLE



UNITED



BEAVER

Resilience / Water element



Sasha Reisin & Urbanismo Vivo - Arsenal Park

BEAVER

The beaver is a transformative animal when it comes to shaping spaces. It thrives in both land and water environments, using its impressive ability to work with logs and trees to construct dams that alter the flow of water and modify the landscape.

In this region, the beaver holds a symbolic significance as an animal that once thrived abundantly but eventually faced extinction. Its presence serves as a reminder of the rich history and ecological changes that have occurred over time.

The beaver's remarkable engineering skills and its role in creating wetland habitats make it a keystone species. By constructing dams, beavers create ponds and wetlands, which provide shelter and sustenance for a diverse range of plant and animal species. These alterations to the landscape have a profound impact on the ecosystem, promoting biodiversity and creating a unique and dynamic habitat.

RESILIENCE: POND

Water represents the pond, which is a spatial reference point for many people, especially from older generations. It is a space for gathering and recreational activities.

In its liquid state, water is used for contemplation, play, and refreshing oneself. In its solid state, as ice, it can be used for ice-skating, playing, and gathering. The changing nature of water and its different forms provide a unique experience for visitors to the park throughout the year. Water is an essential element for life, and its presence in the park is a reminder of the importance of preserving and protecting our natural resources.

LAWRENCEVILLE



UNITED



INSTALLATION LOCATION

TURTLE: ground surface between plants and grass
Wired to underground concrete base (not visible)



ARSENAL PARK – PLAYGROUND CONCEPTUAL DESIGN

PITTSBURGH PASHEK MTR

Sasha Reisin & Urbanismo Vivo - Arsenal Park

LAWRENCEVILLE



UNITED



LAWRENCEVILLE
CORPORATION

YOU'RE INVITED:

**Community Development Activities
Meeting on Proposed Addition to Pressure
Chemical (3419 Smallman St.)**



**Thursday, July 27th at St. Augustine Church
6:30 p.m. - 8:00 p.m.**

LAWRENCEVILLE



UNITED



LAWRENCEVILLE
CORPORATION

Upcoming Calendar

- ★ TUESDAYS - 3-7 PM @ Bay41 - Lawrenceville Farmers Market
 - ★ 7/17 - 5-7:30 PM @ Duncan Park - Workday
 - ★ 7/19 - 4-6 PM @ Hop Farm - Sips and Brews Business Networking
 - ★ 7/23 - 6:30 - 8 PM @ St Augustine's - CDAM for Pressure Chemical
 - ★ 8/4 - Homeowner Assistance Program (HAP) applications due!
 - ★ 8/10 - 12- 1 PM (virtual) - Better Streets Lawrenceville Monthly Meeting
 - ★ 8/10 - 6:30 - 8 PM @ Goodwill - Lawrenceville Happenings with Greater Pittsburgh Digital Inclusion Alliance (GPDIA)
 - ★ 8/14 - 5-7:30 PM @ Duncan Park - Workday
 - ★ 8/16 - 8 - 10 AM @ TBD - Coffee and Tea Business Networking
 - ★ 8/16 - 6 - 8 PM @ Contemporary Craft - Enameling Workshop
 - ★ 8/28 - 5-7:30 PM @ Duncan Park - Workday
 - ★ 9/9 - 12-4 PM @ Bay41 - Live in Lawrenceville
-

LAWRENCEVILLE



UNITED



Comments, questions

Lawrenceville United

412-802-7220

info@LUnited.org

Lawrenceville Corporation

412-621-1616

info@lawrencevillecorp.com
