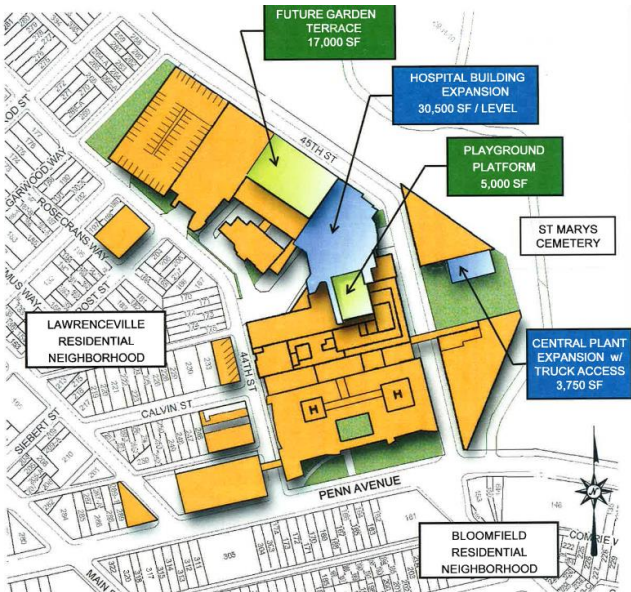


UPMC Children's Hospital of Pittsburgh Heart Institute

Community Meeting

May 25th , 2023

UPMC Children's Hospital of Pittsburgh Heart Institute



2013 Institutional Master Plan | 10 Year Plan

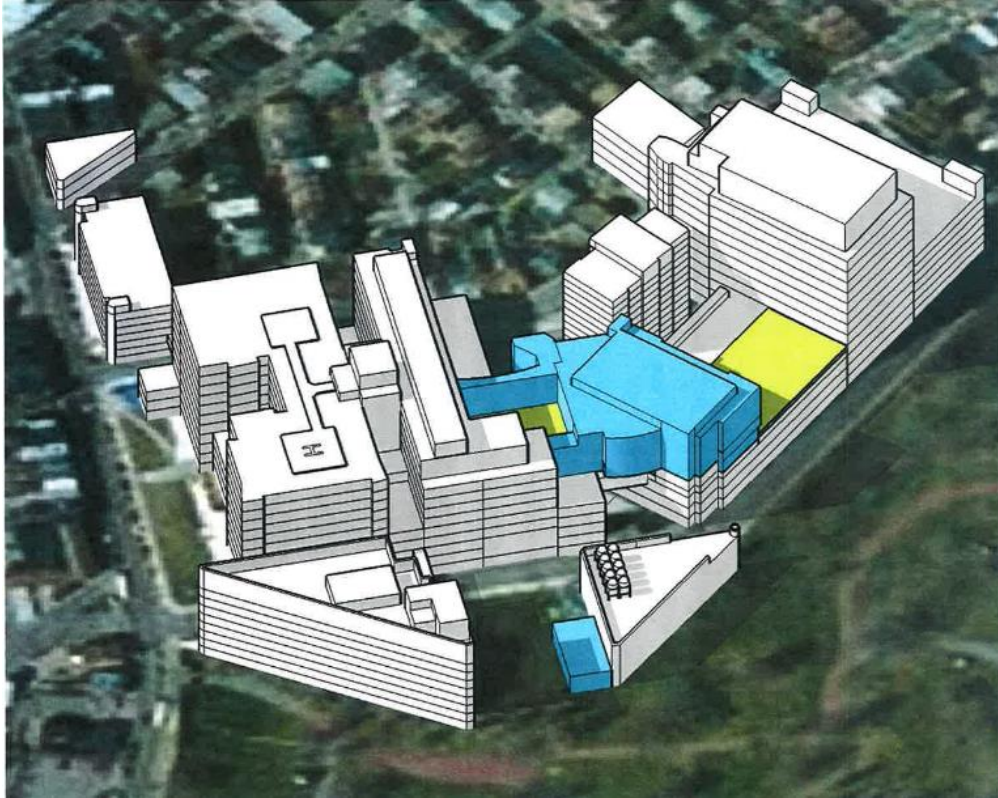
	2013 IMP	Concept Design
Adjacent EMI Boundaries	45 th Street	45 th Street
Adjacent Zones	St. Mary's Cemetery	St. Mary's Cemetery
Maximum Floor Area (SF)	180,000 GSF	50,550 GSF
Maximum Height (ft)	85' Above existing Hospital and Mid-Campus Garage (excl Mech Penthouse)	80'-0" including mechanical
Setback @ 45 th Street (ft)	0' - Front Yard	0' – Front Yard
Other	Built above Parking Garage, as air-rights building	Built above Parking Garage, as air-rights building
New Helipad	No	No
New Vehicular Access	No	No
Impervious Surface Coverage	Approx. 90%	Approx. 90%



Concept Design | Heart Institute

UPMC Children's Hospital of Pittsburgh

Heart Institute



2013 Institutional Master Plan | 10 Year Plan
Hospital Expansion (6 Stories of new construction
over northwest corner of existing 4 story hospital
and Mid Campus Parking Garage)

- Inpatient Facilities, Outpatient Clinics, other hospital functions
- A playground platform will be included in this expansion



Concept Design

3 Story Heart Institute and Hospital Expansion

- Inpatient and Outpatient procedural and diagnostic spaces, including staff support, conference spaces, and waiting / Reception
- No impact to current flight path for Heli-Pad

UPMC Children's Hospital of Pittsburgh Heat Institute



Parking Analysis

2013 Institutional Master Plan

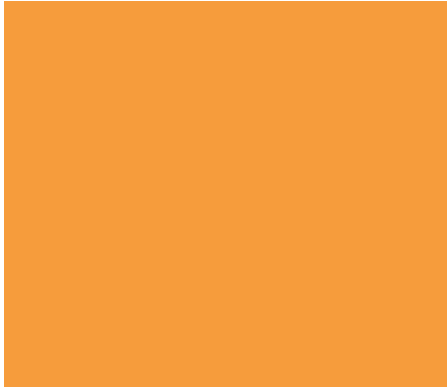
- Trans Associates 2013 analysis indicated, existing on-campus and off-campus inventories would be more than adequate with the projected future increases in demand of the 10 year master plan
- Re-allocation of staff and visitor spaces presented in 2013 is proposed to occur as part of this project, locating visitor parking in closest proximity to the hospital

2013 Institutional Master Plan | 10 Year Plan
Future Parking Allocations



EXTERIOR DESIGN

Color Palette for Heart Institute- Mullions and Cap Extrusions



Existing Metal Colors at UPMC CHP



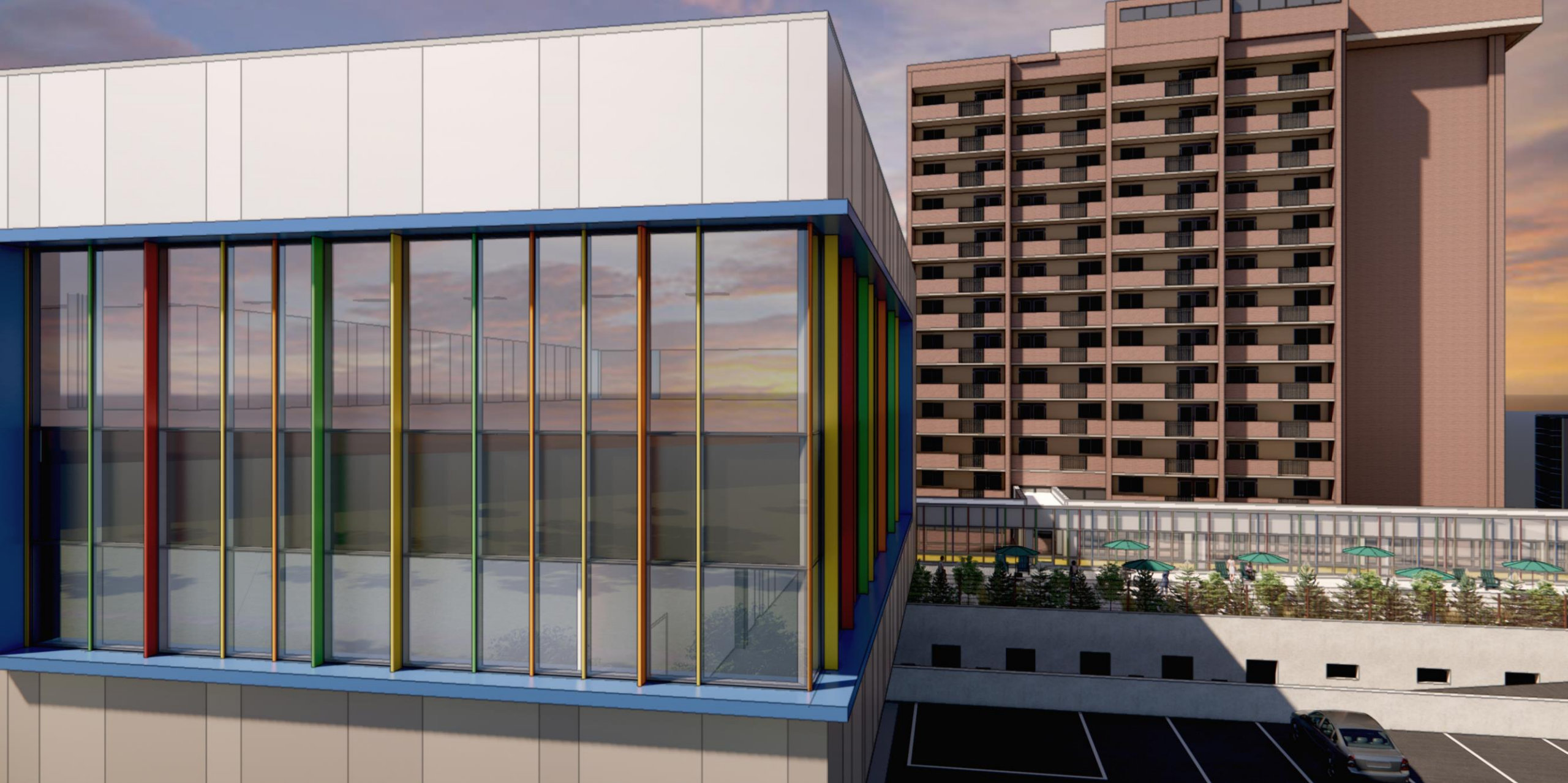
Existing Pre-Patina Copper at UPMC CHP



Champagne WARM with Patina Corner + Brick color Louver



Champagne WARM with Patina Corner + Brick color Louver



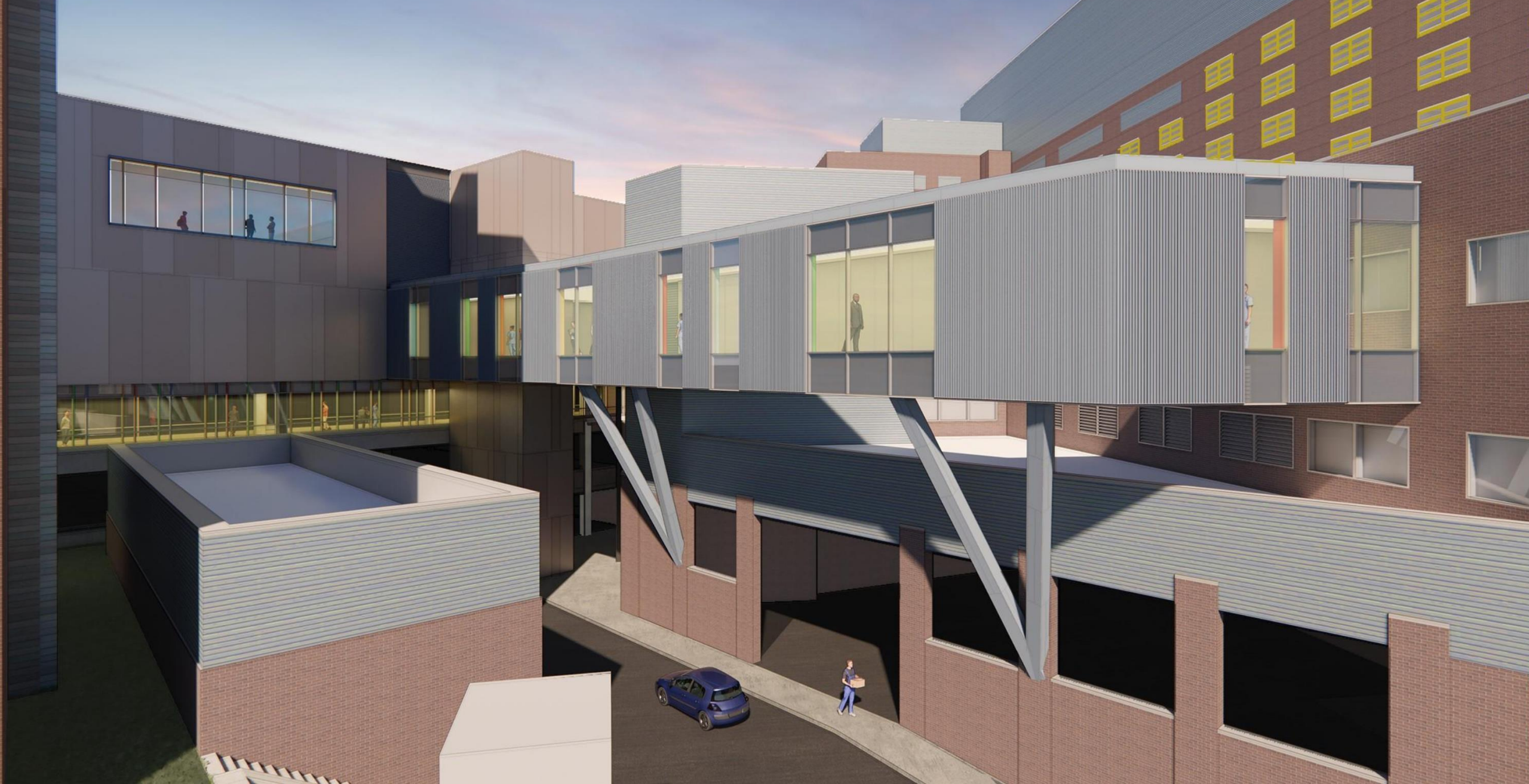
Champagne WARM with Patina Corner + Brick color Louver



Champagne WARM with Patina Corner + Brick color Louver



Champagne WARM with Patina Corner + Brick color Louver





CONSTRUCTION IMPACTS



Phase 1 Includes Sidewalk and Single Lane Closures
Duration Approximately 2-4 Months



Phase 2 Includes Sidewalk and Full Lane Closures
Duration Approximately 10-12 Months



PROJECT CONTACTS

UPMC Children's Hospital of Pittsburgh

Heart Institute

Project Contact List

UPMC Corporate Construction

Shawn McCloskey – Project Director (412) 514-9180

Franco Tavella - Project Manager (412) 215-6674

UPMC Children's Hospital

John Krolicki – Vice President Facilities & Support Services (412) 647-1430

Jim Majsak – Sr Director of Support Services (412) 692-7252

Ken Kerner – Assistant Director Facilities (412) 508-4743

Rycon Construction Inc (Construction Manager)

Brandon Mckee – Project Executive (412) 287-0740

Alec Hanley – Project Manager (412) 737-8052

Tyson Baker – Project Superintendent (412) 366-5274

Thank You!