



ARSENAL TERMINAL REDEVELOPMENT

February 25th, 2016 - NREC

MILHAUS + STRADA + TRANS ASSOCIATES

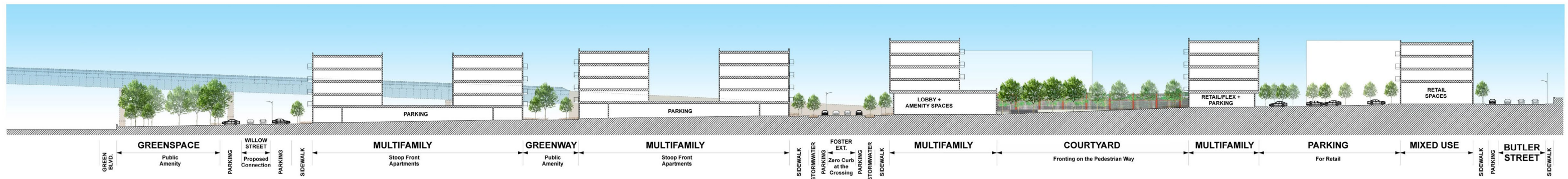
- DEVELOPMENT PLAN
- PARKING
- PUBLIC SPACE
- HISTORIC PRESERVATION
- ZONING SPECIAL EXCEPTIONS
- PHASING
- AFFORDABILITY
- MOBILITY
- CONSTRUCTION IMPACT

PRESENTATION OVERVIEW





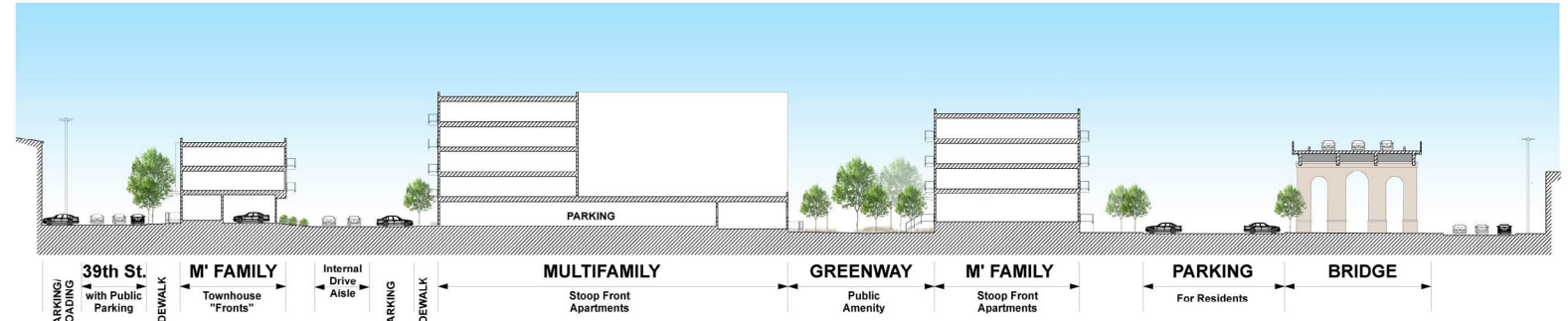
DEVELOPMENT SITE PLAN



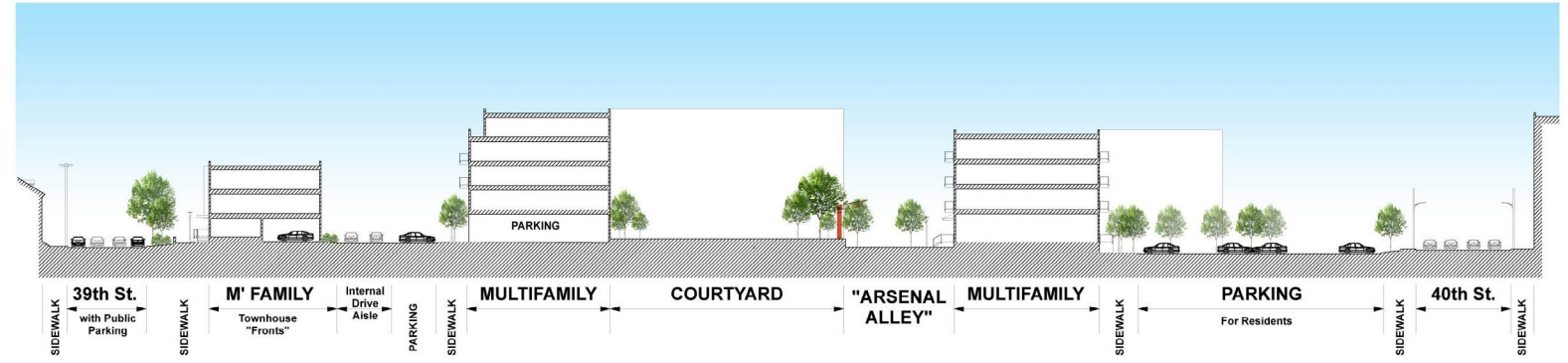
Site Cross-Section #1



Key Plan

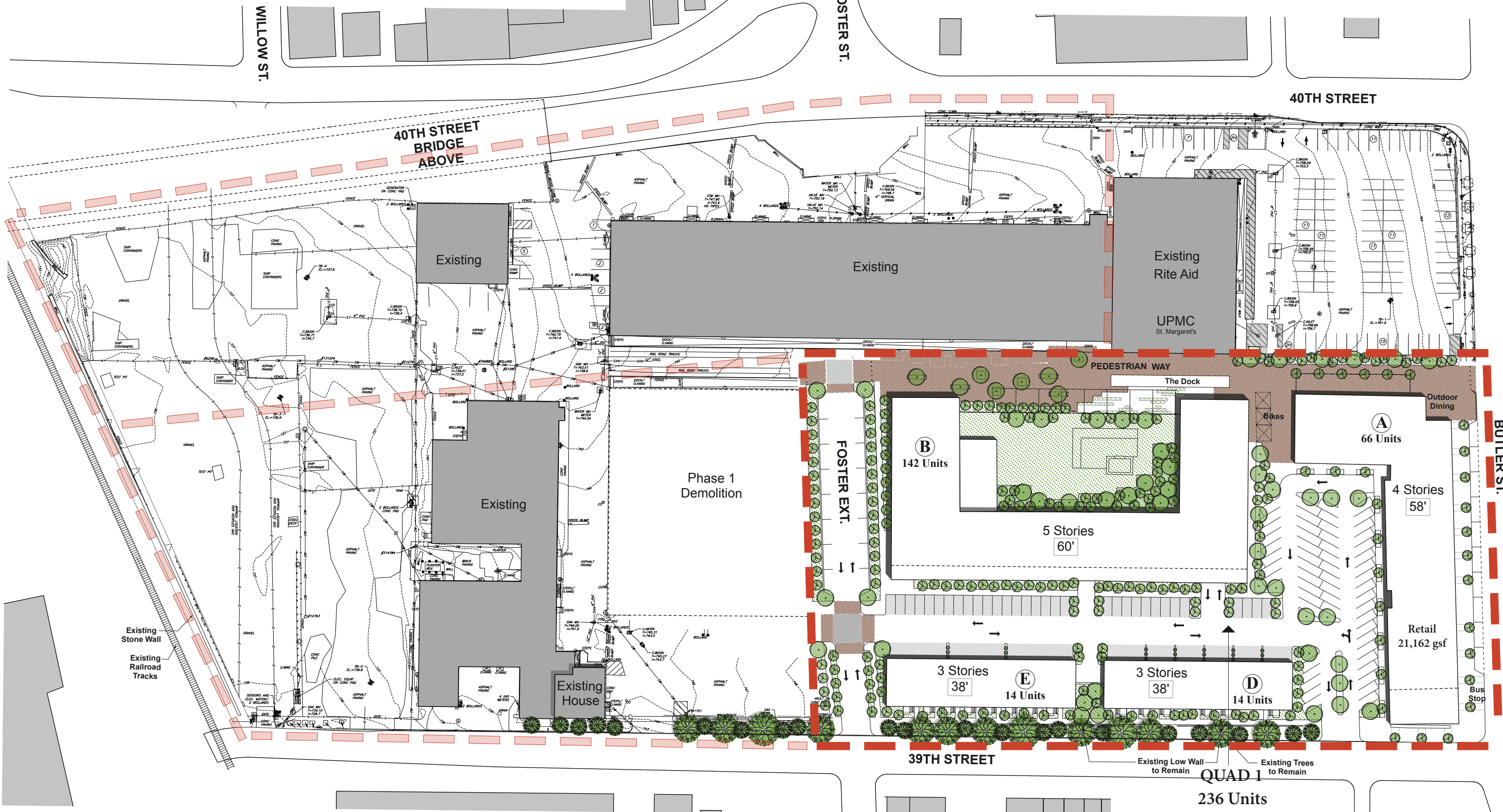


Site Cross-Section #2



Site Cross-Section #3

ZONING SPECIAL EXCEPTIONS



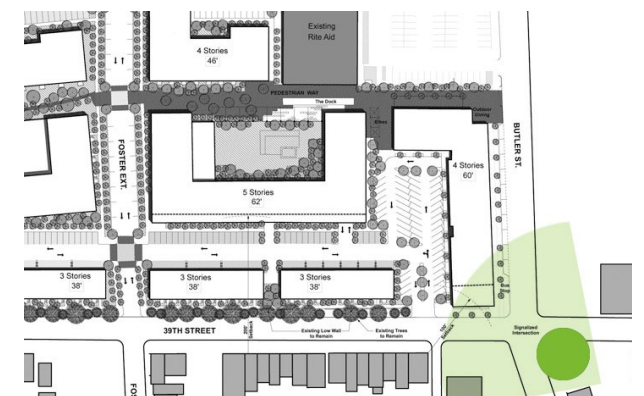
PHASE 1 PLAN

QUAD 1
236 Units
211 Parking Spaces

Strada

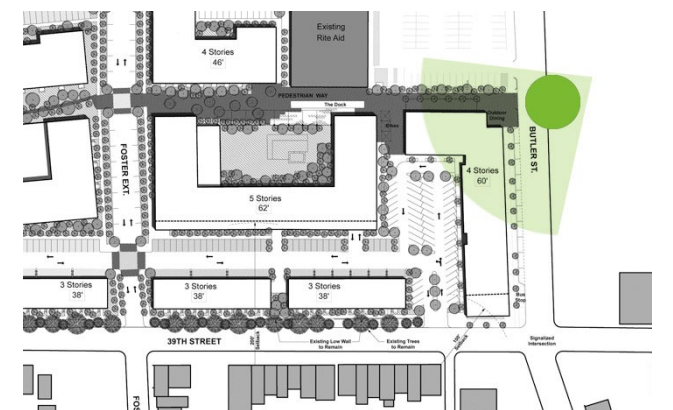


PHASE 1 DESIGN



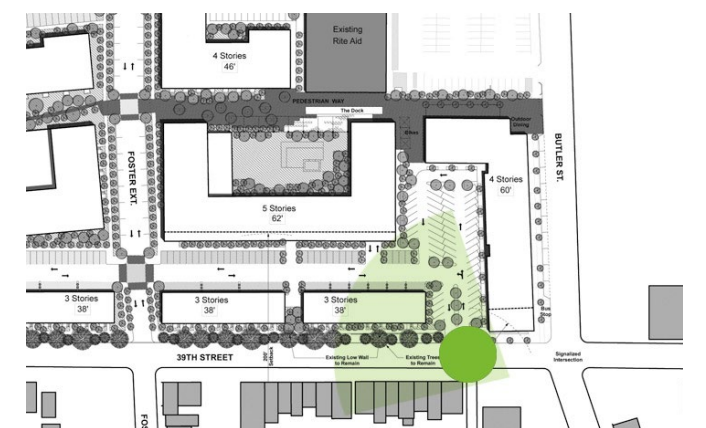


PHASE 1 DESIGN



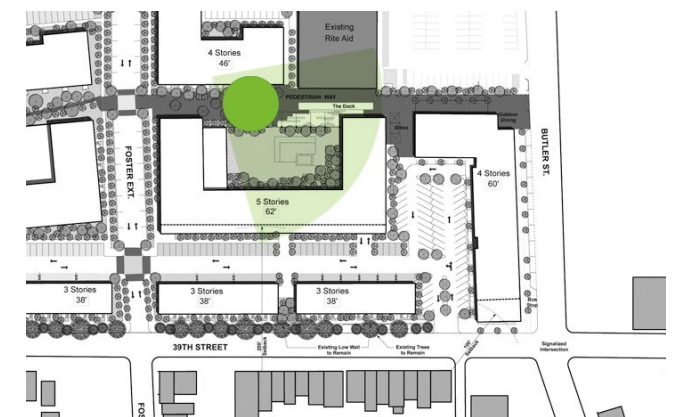


PHASE 1 DESIGN



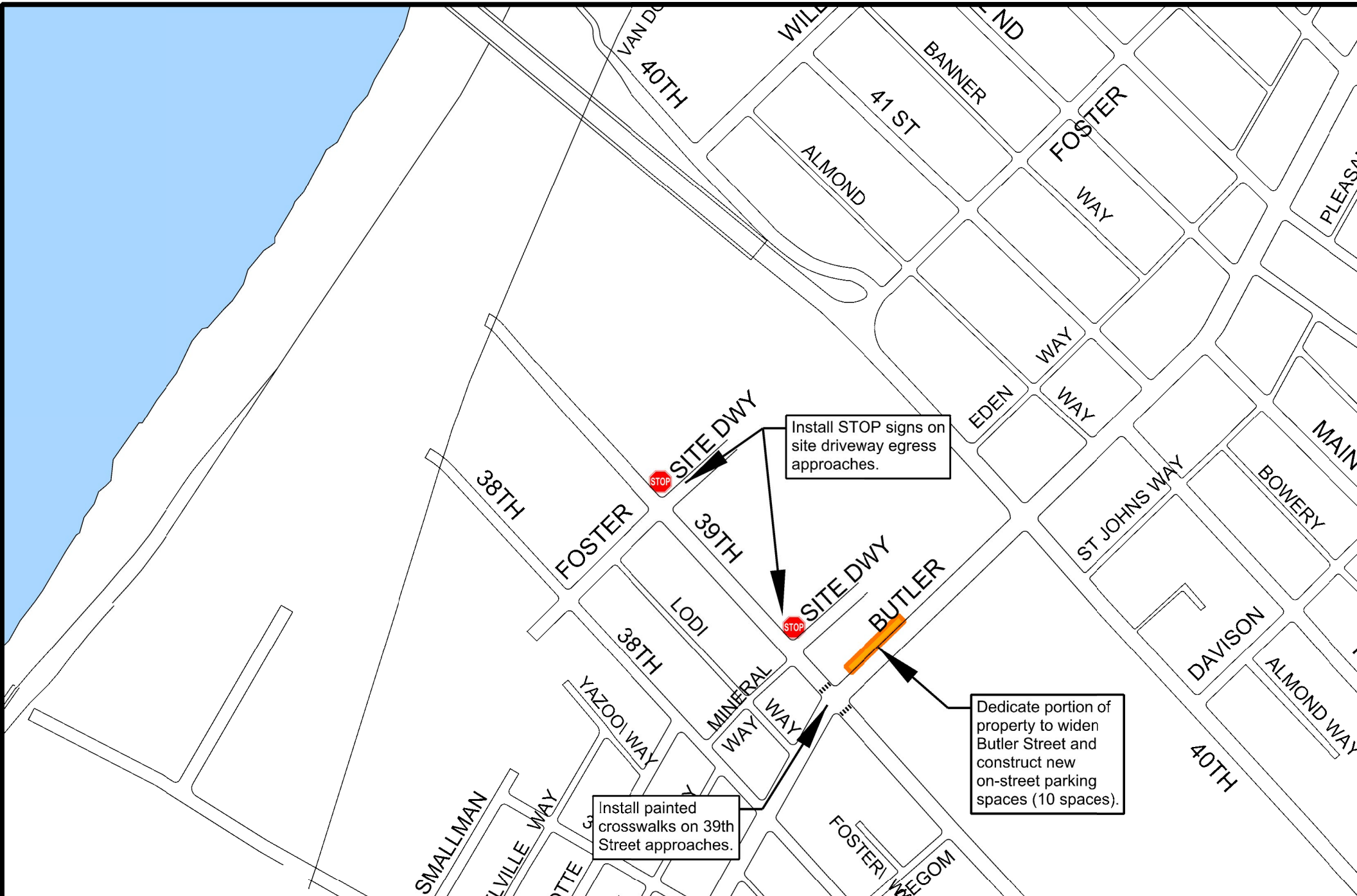




PHASE 1 DESIGN



PLotted: 1/20/2016

FILE NAME: P:\milito00\15106\TIS Figures 8-28-2015.dwg

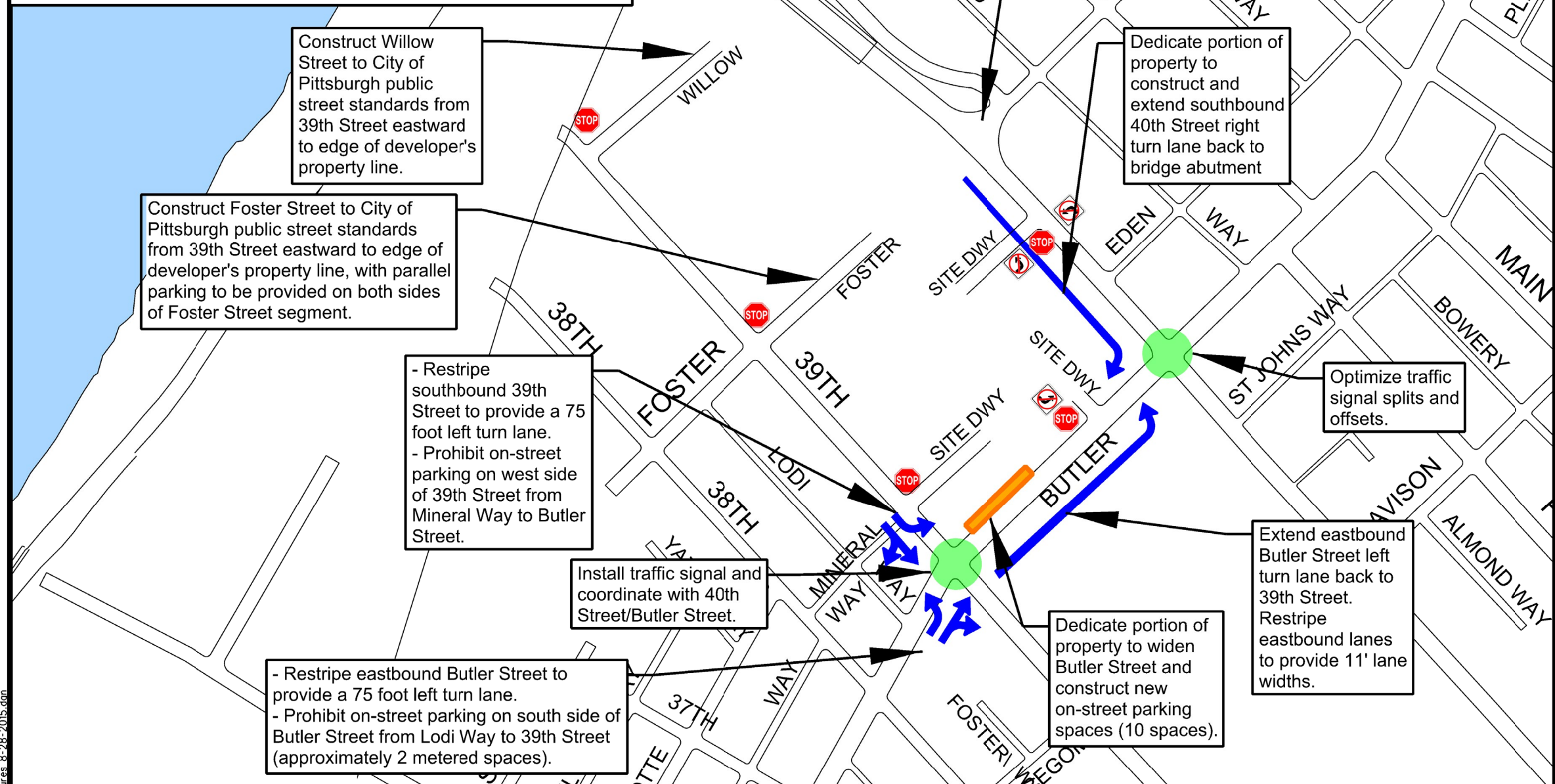



 SCALE: N.T.S.	 Transportation Solutions for Today and Tomorrow Twin Towers Suite 400 / 4955 Steubenville Pike Pittsburgh, Pennsylvania 15205 / (412) 490-0630	PROJECT NO. MILHA00-15106	FIGURE
		PROJECT: Proposed Arsenal Development Transportation Impact Study	1
		TITLE: Phase One Recommended Improvements	D.B. CAD C.B. CAL REV. _____

PHASE 1 TRAFFIC MITIGATION

PLOTTED: 2/22/2016
 FILE NAME: P:\milha00\15106\TIS - Figures - 8-28-2015.dgn

- Install "STOP" sign control on all site driveway egress approaches.
- Install "NO LEFT TURN" sign on 40th Street at Site Driveway
- Install "NO LEFT TURN" sign on Site Driveway to 40th Street.
- Install "NO LEFT TURN" sign on Site Driveway to Butler Street.
- Install " NO PEDESTRIAN CROSSING" sign on Butler Street approaches at the proposed promenade.
- Install bollards on promenade to prevent vehicular access.




 SCALE: N.T.S.


 Transportation Solutions for Today and Tomorrow
 Twin Towers Suite 400 / 4955 Steubenville Pike
 Pittsburgh, Pennsylvania 15205 / (412) 490-0630

PROJECT NO.	MILHA00- 15106
PROJECT:	Proposed Arsenal Development Transportation Impact Study
TITLE:	Master Plan Recommended Improvements

FIGURE	2
D.B.	CAD
C.B.	CAJ
REV.	

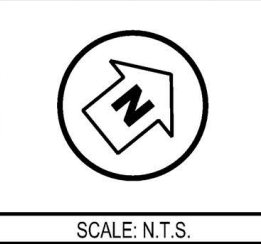
MOBILITY PLAN



QUESTIONS?

PLOTTED: 1/20/2016

FILE NAME: P:\milt000\15106\Butler_39th_Figure.dwg

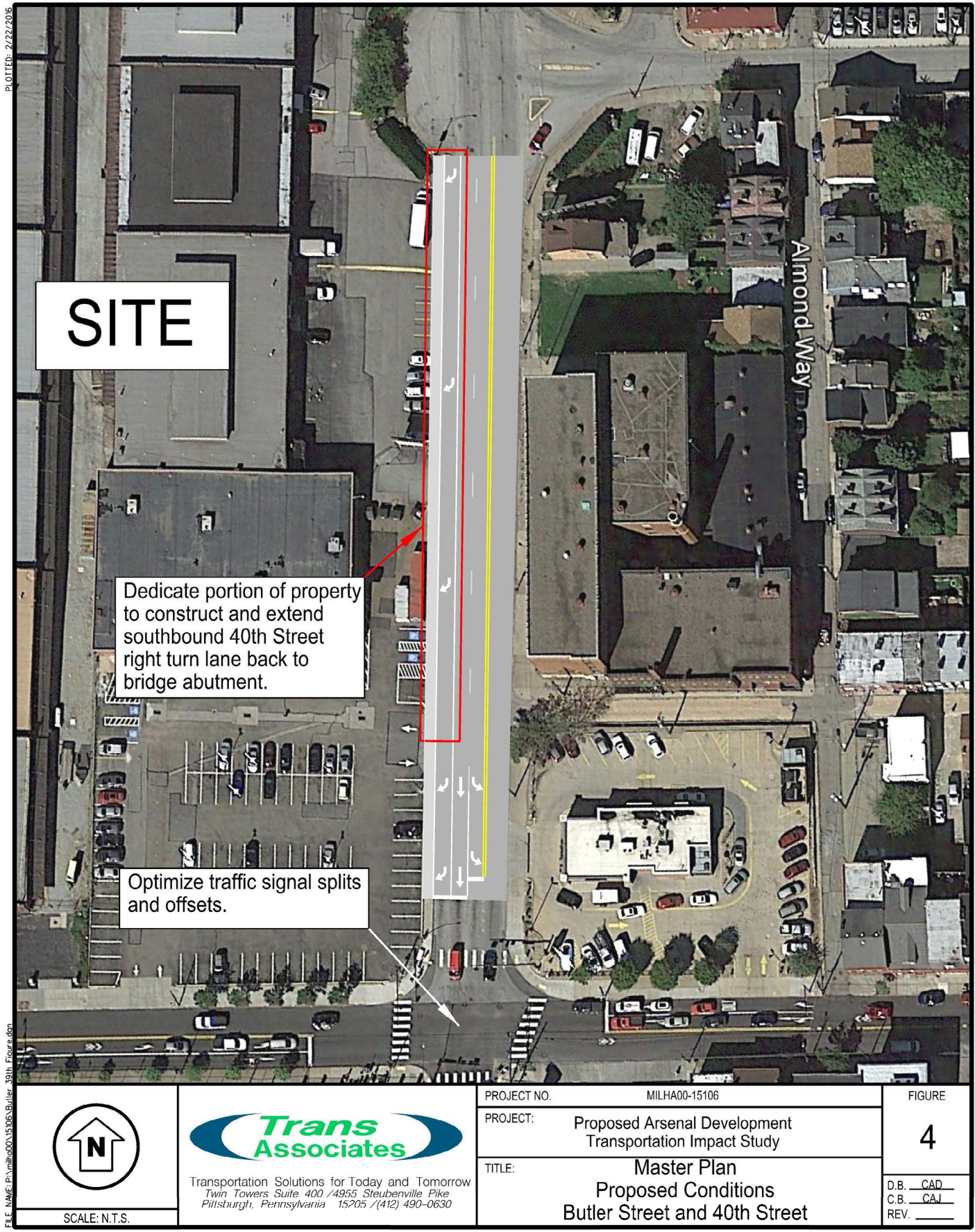


Transportation Solutions for Today and Tomorrow
 Twin Towers Suite 400 / 4955 Steubenville Pike
 Pittsburgh, Pennsylvania 15205 / (412) 490-0630

PROJECT NO.	MILHA00-15106
PROJECT:	Proposed Arsenal Development Transportation Impact Study
TITLE:	Master Plan Proposed Traffic Signal Butler Street and 39th Street

FIGURE	3
D.B.	JAB
C.B.	CAJ
REV.	10/30/15

MOBILITY PLAN



MOBILITY PLAN